

TOOLS REQUIRED



Hammer Drill



1/2" Masonry  
Drill Bit (2" minimum  
drilling depth)

Drill Bit Stop Collar  
[RECOMMENDED]



Drop-In Anchor  
Setting Tool



Hammer



Marker



Vacuum  
[RECOMMENDED]

MOUNTING HARDWARE INCLUDED



Mounting Studs  
& Wingnuts



316 SS Drop Anchors

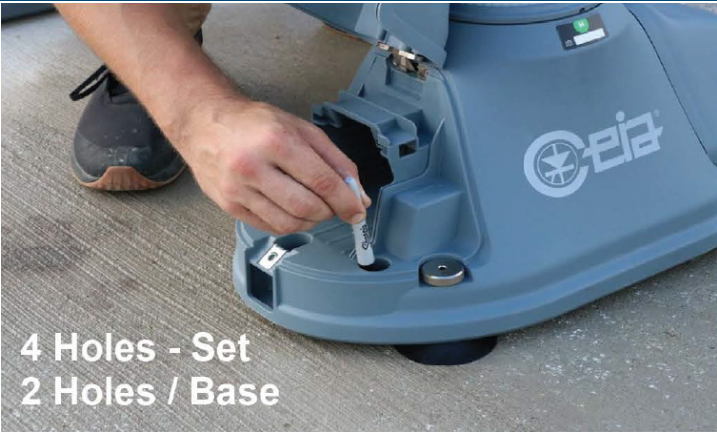
1. SET PASSAGE WIDTH



2. SET THE BASE WIDTH [BOTH SIDES MUST BE SQUARE]



3. MARK THE HOLE TO DRILL ON EACH SIDE



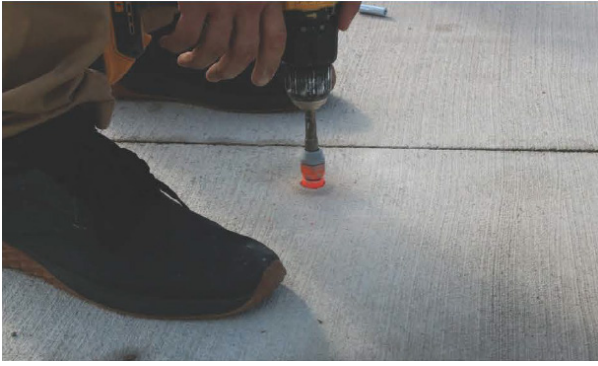
4 Holes - Set  
2 Holes / Base

4. SET DRILL BIT LENGTH [2" DEPTH]





#### 5. DRILL FOUR 2" DEEP HOLES



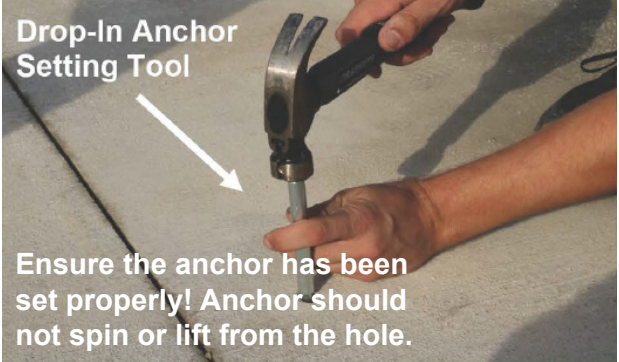
#### 6. CLEAN/PREP HOLES



#### 7. INSERT ANCHORS



#### 8. SET ANCHORS



#### 9. INSERT THE ANCHORING STUDS



#### 10. PLACE OPENGATE™ OVER ANCHORING STUDS



#### 11. SECURE OPENGATE™ TO ANCHORING STUDS

Carefully tighten wing-nuts until they are firmly securing OPENGATE™ to the ground. Do not over-tighten.

Ensure none of the suction cup feet are extended before placement.



#### 12. LEVEL OPENGATE™ (IF NECESSARY)

Adjust suction cup feet to help level and stabilize.



**CEIA USA** - 6336 Hudson Crossing Parkway, Hudson, OH 44236  
T-Sales: [330] 405-3190, Service: [833] 224-2342  
E-Sales: security@ceia-usa.com, Service: techsupport@ceia-usa.com

CEIA USA reserves the right to make changes, at any moment and without notice, to the models [including programming], their accessories and options, to the prices and conditions of sale. This document is the property of CEIA and CEIA USA, which reserves all rights. Total or partial copying, modification and translation are prohibited. Document Code: DOC-MKTG-29